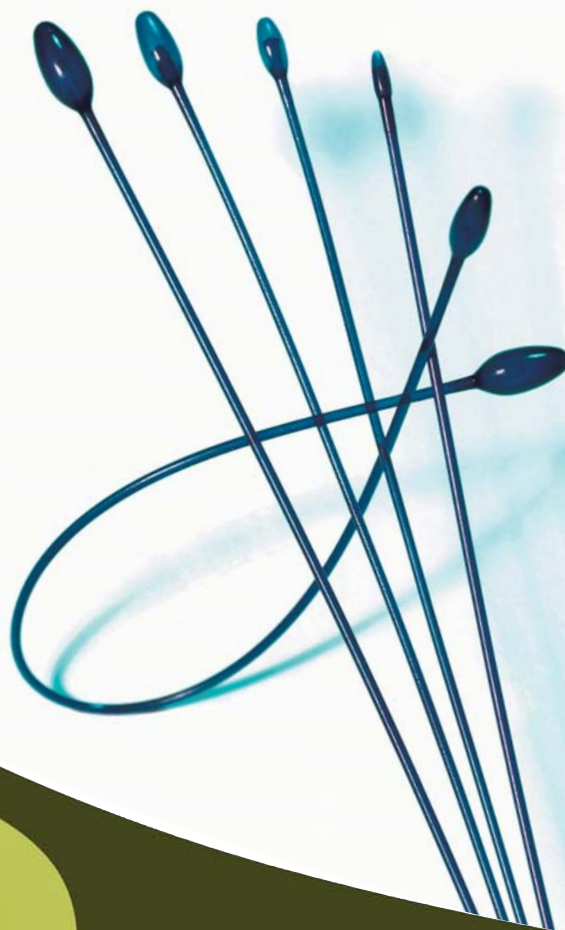


Vascular Probe

A unique "two probes in one" design for facilitating the performance of small vascular anastomoses.



Vascular Probe

Intravascular Probe

Synovis®
Surgical Innovations

Vascular Probe

The Vascular Probe is atraumatic and designed to facilitate easy, safe and effective vessel stenting, retraction and occlusion. Its “two probes in one” design consists of two graduated, different sized “olive” shaped bulbs, one at each end of a flexible polymeric shaft. The shaft and bulbs are comprised of an extremely smooth, medical-grade polymeric substance and the entire surface of the probe is covered with a thin layer of silicone.

Clinical Benefits

- Flexible shaft allows the vessel to be tracked without damaging the intima of the vessel
- Smooth medical-grade silicone coating assures easy passage through the vessel lumen
- Streamlined “olive” shaped bulbs create atraumatic vessel stenting, retraction and occlusion
- Extra supple version available for additional shaft flexibility

Using the Vascular Probe

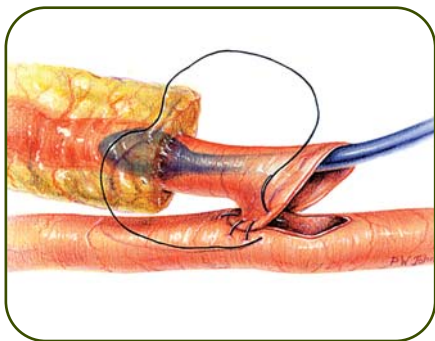


Figure 1

- Insertion into the internal mammary artery (IMA) allows gentle traction which aids in “taking down” the IMA

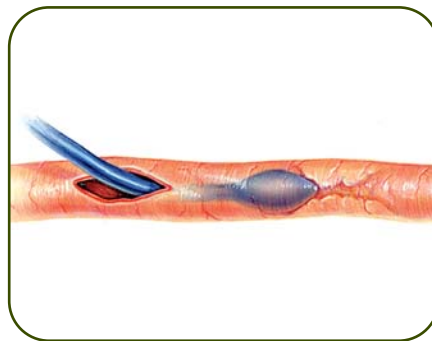


Figure 2

- Locate occlusions intraluminally either upstream or downstream from an anastomosis
- Explore the proximal and distal artery for size, patency, and to confirm location of stenosis
- Occlude vessels atraumatically - proximally, distally, or both - to maintain a dry field

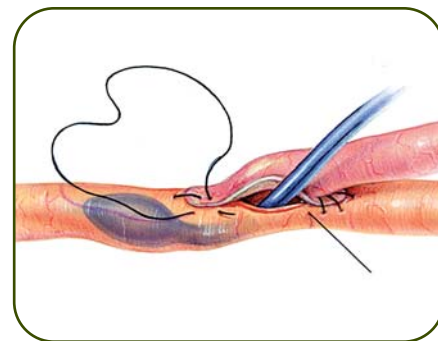


Figure 3

- Gently lift the vessel edge of the anastomosis for more precise needle placement
- Stent vessels - proximally, distally, or both

Surgical Applications

Coronary bypass surgery and peripheral vascular bypass surgery:

- Femoral-popliteal bypass
- Tibial bypass
- Peroneal bypass
- Dorsal-pedal bypass

A Convenient Choice

- Two different bulb sizes, one on each end of a flexible shaft
- Shaft available in 8 cm, 15 cm, and 45 cm lengths in three bulb size combinations: 1.0 & 1.5 mm; 1.5 & 2.0 mm; and 2.0 & 2.5 mm
- Combination of length and bulb sizes make the Vascular Probe more useful, versatile, and cost-effective than other probes or dilators

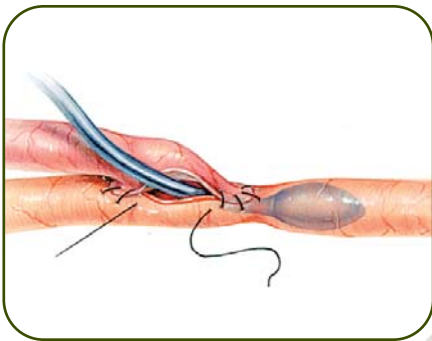


Figure 4

- Test the quality of distal runoff during small vessel bypass procedures; patency is confirmed as air is voided prior to suture tightening
- Detect anastomotic strictures at suture line while withdrawing probe

Ordering Information

Available in a range of bulb diameters, the Vascular Probe is supplied sterile and ready to use in 8 cm, 15 cm and 45 cm shaft lengths. Each probe is packaged in a standard Tyvek, double aseptic transfer, peel back pouch. There are five probes of equal size per box. Minimum order quantity is one box.

For ease and accuracy of ordering, please use the numbers indicated below. For the extra supply version, simply add an ES to the product number as shown below.

	PRODUCT NUMBERS		BULB DIAMETER	NO. PER BOX
	STANDARD	EXTRA SUPPLY		
8 CM LENGTHS	7081015	7081015ES	1.0 mm & 1.5 mm	5
	7081520	7081520ES	1.5 mm & 2.0 mm	5
	7082025	7082025ES	2.0 mm & 2.5 mm	5
15 CM LENGTHS	7151015	7151015ES	1.0 mm & 1.5 mm	5
	7151520	7151520ES	1.5 mm & 2.0 mm	5
	7152025	7152025ES	2.0 mm & 2.5 mm	5
45 CM LENGTHS	7451015	7451015ES	1.0 mm & 1.5 mm	5
	7451520	7451520ES	1.5 mm & 2.0 mm	5
	7452025	7452025ES	2.0 mm & 2.5 mm	5

ORDERING KEY

Example: 7151520
 7 = product identifier
 15 = shaft length
 1520 = bulb sizes, 1.5 mm & 2.0 mm

Special orders are available. Special orders require additional charges and manufacturing time.

Vascular Probe is for single-use only and cannot be resterilized. Contact your sales representative or Synovis Surgical Innovations for ordering information, in-service support materials, and technical specifications.

Synovis®

Surgical Innovations

A Division of Synovis Life Technologies, Inc.

2575 University Ave. W.
 St. Paul, MN 55114-1024 USA
 651.796.7300 800.255.4018
 651.642.9018 (fax)
 synovissurgical.com

Distributed by:

CAUTION: Federal (U.S.A.) law restricts this device to sale by or on the order of a physician. For complete instructions for use, storage, warnings, indications, contraindications, precautions, adverse reactions, and disclaimer of warranties, please refer to the insert accompanying each Vascular Probe product.
 95006E 6/04 © 1997 Synovis Surgical Innovations. All rights reserved. Printed in the U.S.A.

CE
 0086