

ARTISENTIAL

Articulating Laparoscopic Instrument



reddot award 2019
winner

LIV'SMED
www.livsmed.com



ARTISENTIAL

Articulating Laparoscopic Instrument



Bipolar Fenestrated Forceps

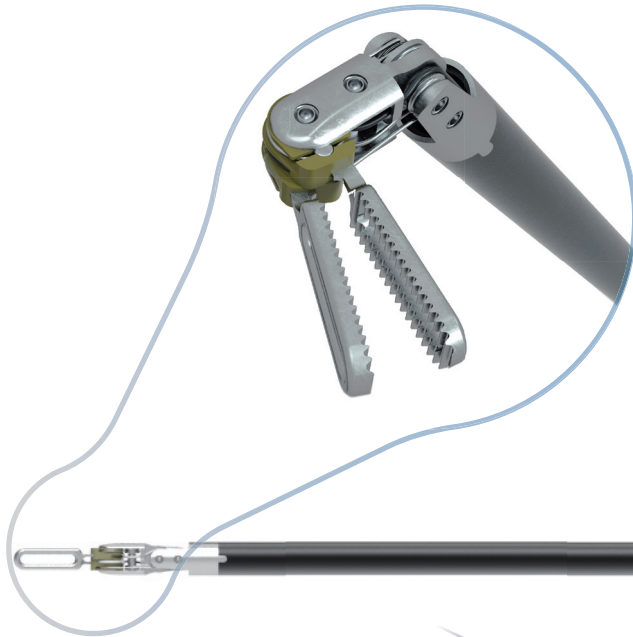
ArtiSential is a blending of two words Articulation and Essential.

It's multi-joint-end-effectors allow for articulation that is essential for accessing narrow surgical sites and precision surgery.

One word that can describe 'ArtiSential' is its 'intuitiveness'. The movement of the user's hand, wrist, and fingers are synchronized with the corresponding movements of the end-effector.

ARTISENTIAL

Articulating Laparoscopic Instrument



Multi-joint End Effector

- Provides 7 degrees of freedom, enabling various angles of approach to the surgical site.

- Available in 3 lengths (25cm, 38cm, 45cm)

Introducing ArtiSential

ArtiSential's double-jointed end effector enables precise access to complex, difficult-to-reach surgical spaces.

| Electrode

- Bipolar or Monopolar depending on product model



| Jaw Control Rings

- Facilitates opening/closing of jaws by thumb and index finger
- Ambidextrous design

| Hand Grip

- Designed to fit wide range of hand sizes

| Adjustable Jaw Control Rings (Optional feature)



[Normal]



[Adjustable]

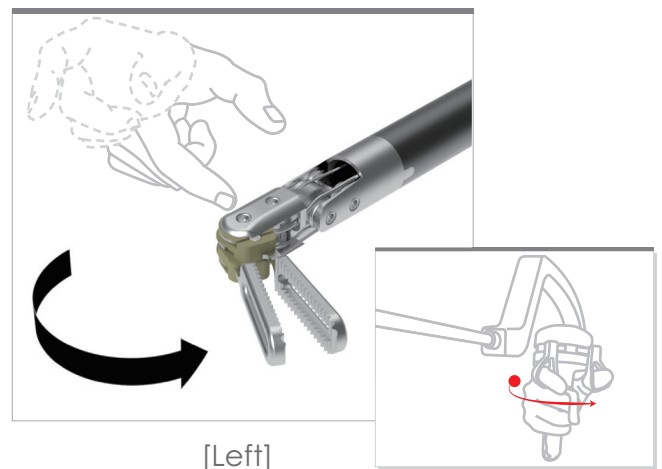
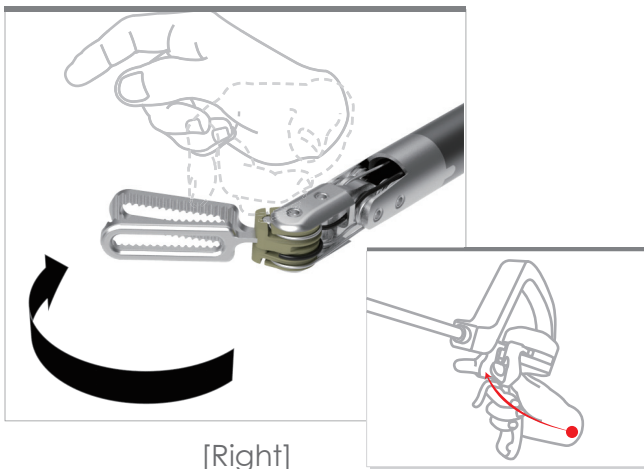
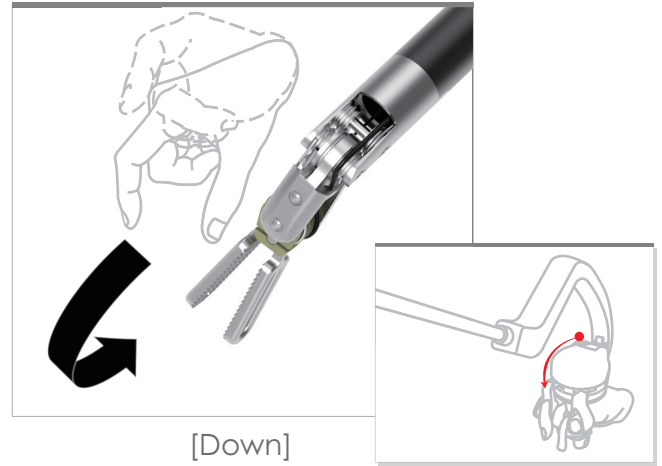
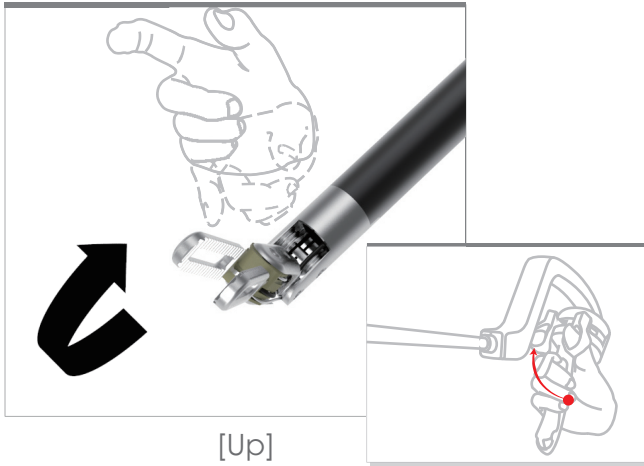
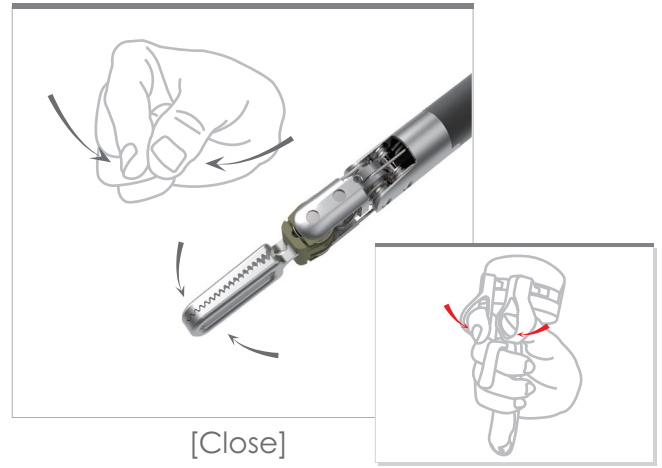
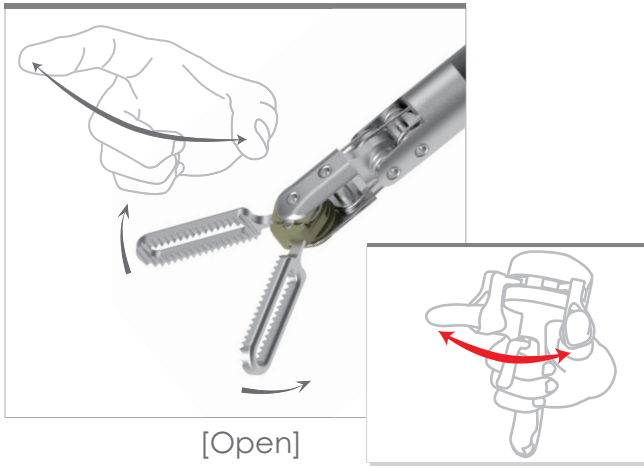
- Adjustable straps secure user's fingers to jaw control rings
- Provides convenient and customized control

| Ergonomic Design

- Provides intuitive, highly Flexible articulating control

| Locking Lever (Optional feature)

- Deactivates double-joint of the end-effector
- Still allows open/close function



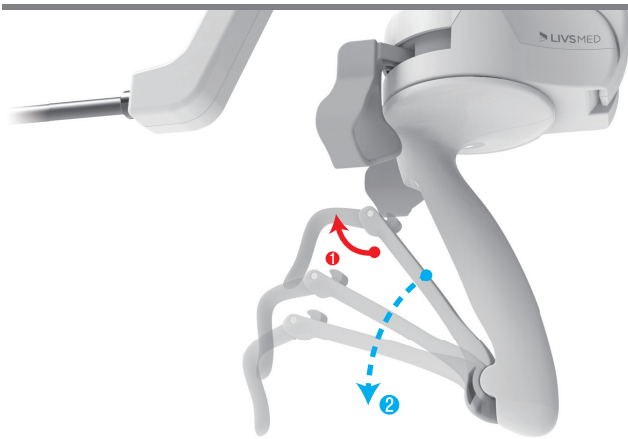
Articulation Is Essential
Synchronized Interface

ArtiSential's end effector has two joints enabling both vertical and horizontal movements that are perfectly synchronized with the user's hand. Its multiple degrees of freedom assist the user in performing highly complex movements in a wide variety of surgical procedures.

ARTISENTIAL

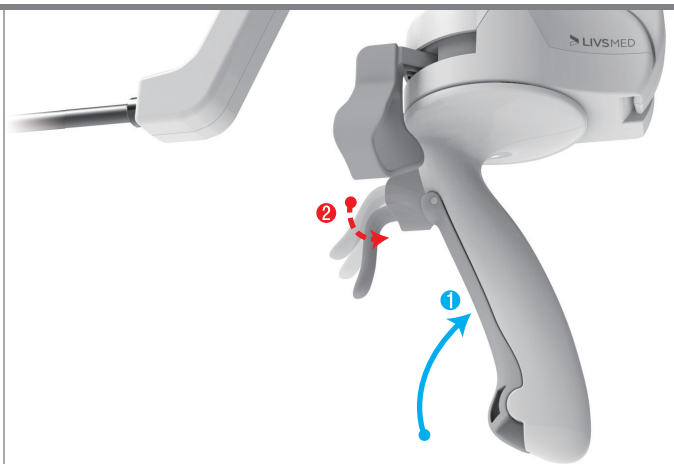
Articulating Laparoscopic Instrument

How to use the lock



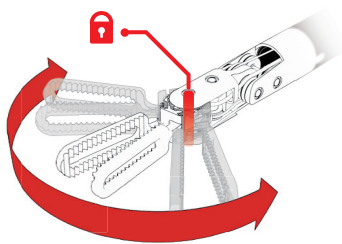
Push the **1** lever outward
The **2** lever goes down and activates the lock

Activating the locking feature

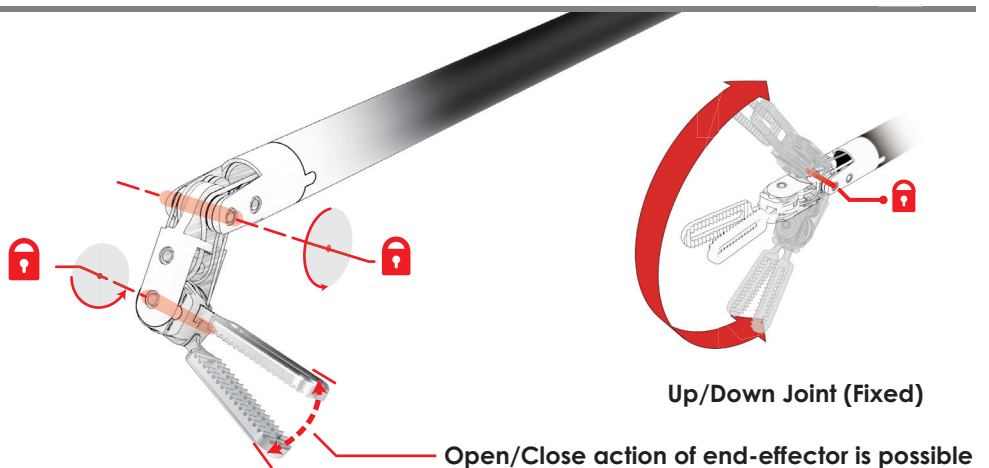


Pull the **1** lever inward until
the **2** lever clicks and deactivates the lock

Deactivating the locking feature



Left/Right Joint (Fixed)



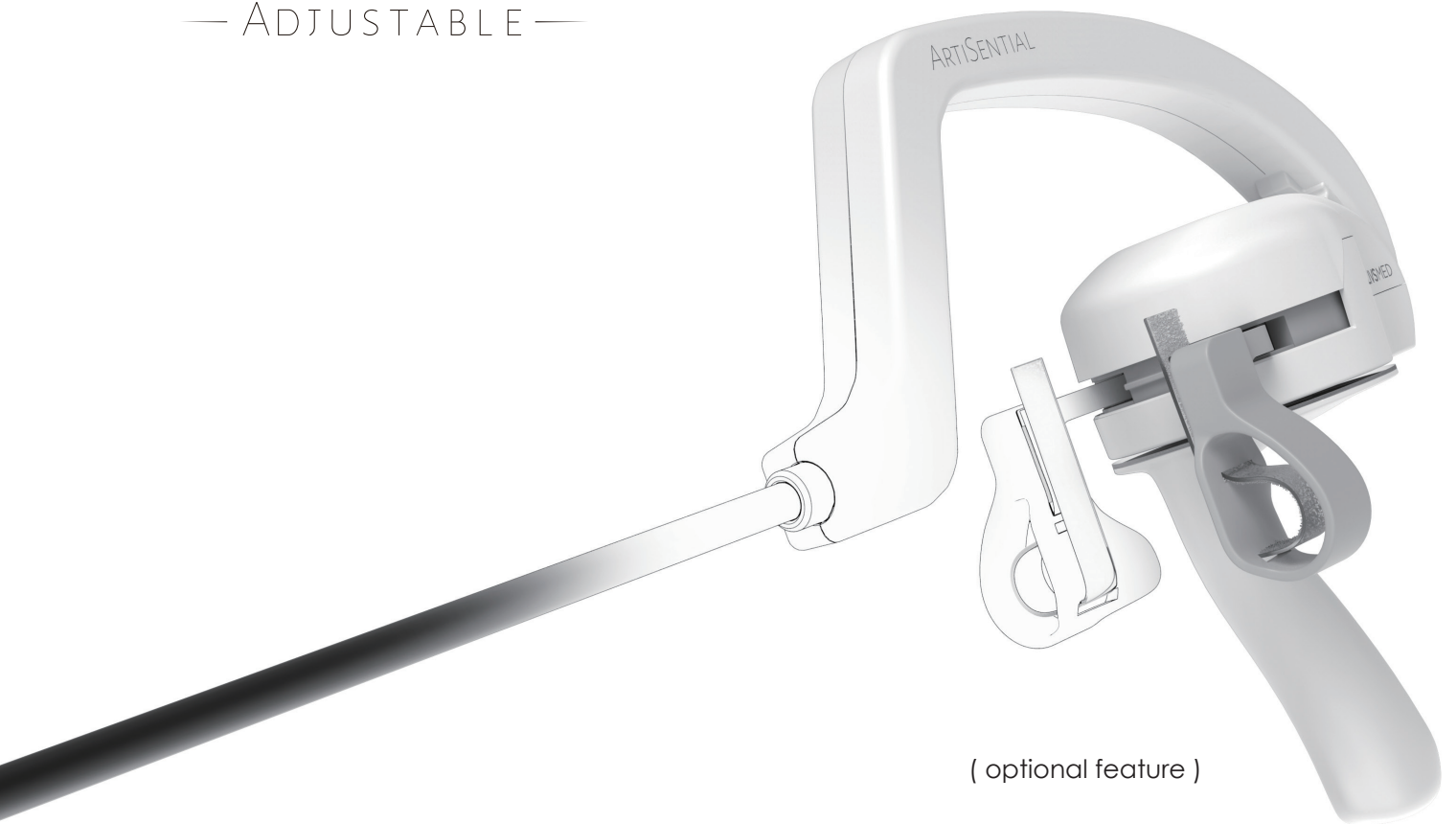
Up/Down Joint (Fixed)

Open/Close action of end-effector is possible

When the locking feature is activated UP/DOWN, LEFT/RIGHT articulating joint is fixed and cannot move, but OPEN/CLOSE action of end-effector is possible.

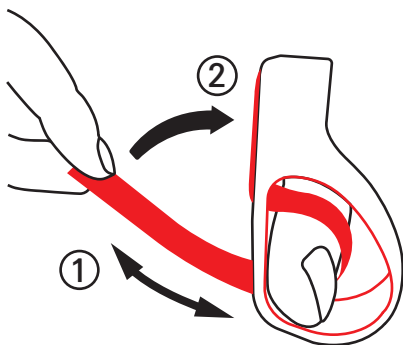
ARTISENTIAL

Articulating Laparoscopic Instrument
— ADJUSTABLE —

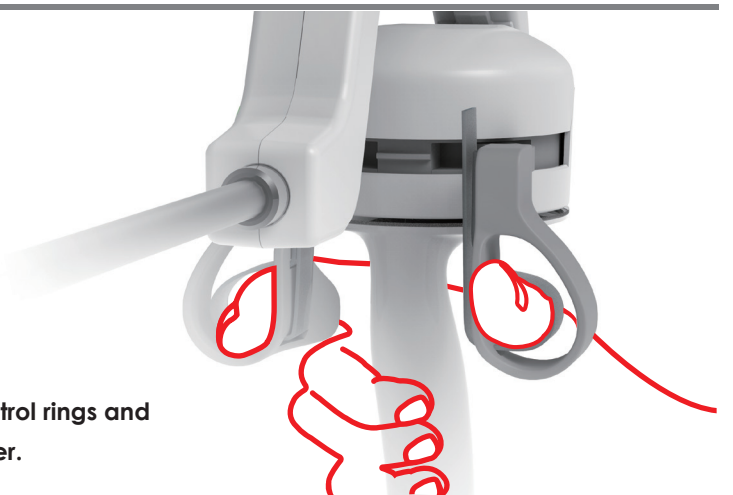


(optional feature)

How to use the Adjustable jaw control rings



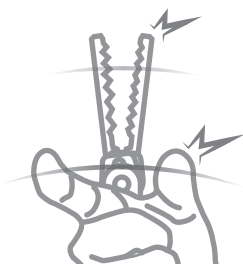
Adjust the strap by ① inserting your finger into the jaw control rings and ② pulling the strap and tighten it to fit your finger.



Adjust the straps to fit your fingers.

The fingers are fastened to the jaw control rings, allowing comfortable and easy control of the end effector.

ADVANTAGES



Articulation with Tactile Feedback

ArtiSential provides advantages of articulating instruments without losing tactile feedback, which is essential for applying precise force on delicate tissue.



Flexible Access

ArtiSential's double-jointed end effector allows various angles of approach with 7 degrees of freedom. This enables greater access to a variety of anatomical structures.



Ergonomic Interface

ArtiSential features a modified precision grip that synchronizes with the movements of the user's hand and wrist. This provides ergonomically friendly manipulation and control.



Growing Articulating Product Line

Our growing portfolio of instruments continues to expand to meet the need of advanced, minimally invasive surgeons in a variety of procedures.



A New Paradigm for Minimally Invasive Surgery

Any OR, anytime. ArtiSential eliminates the need for scheduled block time. Our product line can be used in the existing surgical environment without any additional device, capital system, or footprint. ArtiSential leads to immediate capabilities.

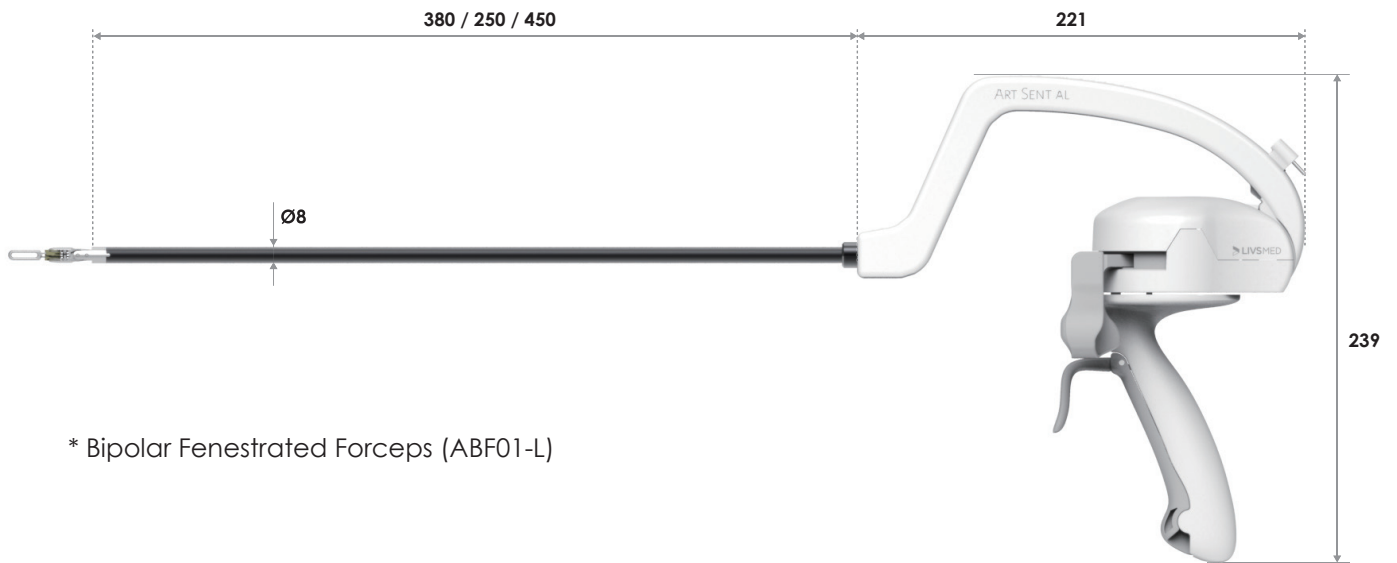


LIV'SMED

ArtiSential Instruments



SPECIFICATIONS



* Bipolar Fenestrated Forceps (ABF01-L)

ITEM CODE	PRODUCT DESCRIPTION	JAW LENGTH	SHAFT DIAMETER	SHAFT LENGTH	LOCK	ELECTRODE	UNITS/BOXU	SES
-----------	---------------------	------------	----------------	--------------	------	-----------	------------	-----

► Fenestrated Forceps



AUF01-F	Fenestrated Forceps-38cm			38cm	N/A			
AUF01-L	Fenestrated Forceps-38cm-Lock			38cm	○			
AUF01S-F	Fenestrated Forceps-25cm	18mm	8mm	25cm	N/A	N/A	1EA/BOXS	ingle Use
AUF01S-L	Fenestrated Forceps-25cm-Lock			25cm	○			
AUF01L-F	Fenestrated Forceps-45cm			45cm	N/A			
AUF01L-L	Fenestrated Forceps-45cm-Lock			45cm	○			

► Bipolar Fenestrated Forceps



ABF01-F	Bipolar Fenestrated Forceps-38cm			38cm	N/A			
ABF01-L	Bipolar Fenestrated Forceps-38cm-Lock			38cm	○			
ABF01S-F	Bipolar Fenestrated Forceps-25cm	18mm	8mm	25cm	N/A	Bipolar	1EA/BOX	Single Use
ABF01S-L	Bipolar Fenestrated Forceps-25cm-Lock			25cm	○			
ABF01L-F	Bipolar Fenestrated Forceps-45cm			45cm	N/A			
ABF01L-L	Bipolar Fenestrated Forceps-45cm-Lock			45cm	○			

► Maryland Dissector



AUD01-F	Maryland Dissector-38cm			38cm	N/A			
AUD01-L	Maryland Dissector-38cm-Lock			38cm	○			
AUD01S-F	Maryland Dissector-25cm	20mm	8mm	25cm	N/A	N/A	1EA/BOX	Single Use
AUD01S-L	Maryland Dissector-25cm-Lock			25cm	○			
AUD01L-F	Maryland Dissector-45cm			45cm	N/A			
AUD01L-L	Maryland Dissector-45cm-Lock			45cm	○			

ITEM CODE	PRODUCT DESCRIPTION	JAW LENGTH	SHAFT DIAMETER	SHAFT LENGTH	LOCK	ELECTRODE	UNITS/BOX	USES
-----------	---------------------	------------	----------------	--------------	------	-----------	-----------	------

► Bipolar Maryland Dissector



ABD01-F	Bipolar Maryland Dissector-38cm			38cm	N/A			
ABD01-L	Bipolar Maryland Dissector-38cm-Lock			38cm	O			
ABD01S-F	Bipolar Maryland Dissector-25cm	20mm	8mm	25cm	N/A	Bipolar	1EA/BOX	Single Use
ABD01S-L	Bipolar Maryland Dissector-25cm-Lock			25cm	O			
ABD01L-F	Bipolar Maryland Dissector-45cm			45cm	N/A	N/A		
ABD01L-L	Bipolar Maryland Dissector-45cm-Lock			45cm	O			

► Bipolar Precise Dissector



ABD02-F	Bipolar Precise Dissector-38cm			38cm	N/A			
ABD02-L	Bipolar Precise Dissector-38cm-Lock			38cm	O			
ABD02S-F	Bipolar Precise Dissector-25cm	17mm	8mm	25cm	N/A	Bipolar	1EA/BOX	Single Use
ABD02S-L	Bipolar Precise Dissector-25cm-Lock			25cm	O			
ABD02L-F	Bipolar Precise Dissector-45cm			45cm	N/A			
ABD02L-L	Bipolar Precise Dissector-45cm-Lock			45cm	O			

► Monopolar Precise Dissector



AMD01-L	Monopolar Precise Dissector-38cm-Lock			38cm	O			
AMD01S-L	Monopolar Precise Dissector-25cm-Lock	14mm	8mm	25cm	O	N/A	1EA/BOX	Single Use
AMD01L-L	Monopolar Precise Dissector-45cm-Lock			45cm	O			

► Needle Holder



ANH01-F	Needle Holder-38cm			38cm	N/A			
ANH01-L	Needle Holder-38cm-Lock			38cm	O			
ANH01S-F	Needle Holder-25cm	12mm	8mm	25cm	N/A	N/A	1EA/BOX	Single Use
ANH01S-L	Needle Holder-25cm-Lock			25cm	O			
ANH01L-F	Needle Holder-45cm			45cm	N/A			
ANH01L-L	Needle Holder-45cm-Lock			45cm	O			

► Precise Needle Holder



ANH02-F	Precise Needle Holder-38cm			38cm	N/A			
ANH02-L	Precise Needle Holder-38cm-Lock			38cm	O			
ANH02S-F	Precise Needle Holder-25cm	9mm	8mm	25cm	N/A	N/A	1EA/BOX	Single Use
ANH02S-L	Precise Needle Holder-25cm-Lock			25cm	O			
ANH02L-F	Precise Needle Holder-45cm			45cm	N/A			
ANH02L-L	Precise Needle Holder-45cm-Lock			45cm	O			

ITEM CODE	PRODUCT DESCRIPTION	JAW LENGTH	SHAFT DIAMETER	SHAFT LENGTH	LOCK	ELECTRODE	UNITS/BOX	USES
-----------	---------------------	------------	----------------	--------------	------	-----------	-----------	------

► Clip Applier Medium Large



ACA01-F	Clip Applier Medium Large-38cm			38cm	N/A			
ACA01-L	Clip Applier Medium Large-38cm-Lock			38cm	O			
ACA01S-F	Clip Applier Medium Large-25cm	19mm	8mm	25cm	N/A	N/A	1EA/BOX	Single Use
ACA01S-L	Clip Applier Medium Large-25cm-Lock			25cm	O			
ACA01L-F	Clip Applier Medium Large-45cm			45cm	N/A			
ACA01L-L	Clip Applier Medium Large-45cm-Lock			45cm	O			

► Monopolar Spatula



AMT01-F	Monopolar Spatula-38cm			38cm	N/A			
AMT01-L	Monopolar Spatula-38cm-Lock			38cm	O			
AMT01S-F	Monopolar Spatula-25cm	5mm	8mm	25cm	N/A	Monopolar	1EA/BOX	Single Use
AMT01S-L	Monopolar Spatula-25cm-Lock			25cm	O			
AMT01L-F	Monopolar Spatula-45cm			45cm	N/A			
AMT01L-L	Monopolar Spatula-45cm-Lock			45cm	O			

► Monopolar Hook



AMHU01-F	Monopolar Hook-Up-38cm			38cm	N/A			
AMHU01-L	Monopolar Hook-Up-38cm-Lock			38cm	O			
AMHU01S-F	Monopolar Hook-Up-25cm			25cm	N/A			
AMHU01S-L	Monopolar Hook-Up-25cm-Lock			25cm	O			
AMHU01L-F	Monopolar Hook-Up-45cm			45cm	N/A			
AMHU01L-L	Monopolar Hook-Up-45cm-Lock			45cm	O			
AMHD01-F	Monopolar Hook-Down-38cm			38cm	N/A			
AMHD01-L	Monopolar Hook-Down-38cm-Lock			38cm	O			
AMHD01S-F	Monopolar Hook-Down-25cm			25cm	N/A			
AMHD01S-L	Monopolar Hook-Down-25cm-Lock			25cm	O			
AMHD01L-F	Monopolar Hook-Down-45cm			45cm	N/A			
AMHD01L-L	Monopolar Hook-Down-45cm-Lock	8mm	8mm	45cm	O	Monopolar	1EA/BOX	Single Use
AMHR01-F	Monopolar Hook-Right-38cm			38cm	N/A			
AMHR01-L	Monopolar Hook-Right-38cm-Lock			38cm	O			
AMHR01S-F	Monopolar Hook-Right-25cm			25cm	N/A			
AMHR01S-L	Monopolar Hook-Right-25cm-Lock			25cm	O			
AMHR01L-F	Monopolar Hook-Right-45cm			45cm	N/A			
AMHR01L-L	Monopolar Hook-Right-45cm-Lock			45cm	O			
AMHL01-F	Monopolar Hook-Left-38cm			38cm	N/A			
AMHL01-L	Monopolar Hook-Left-38cm-Lock			38cm	O			
AMHL01S-F	Monopolar Hook-Left-25cm			25cm	N/A			
AMHL01S-L	Monopolar Hook-Left-25cm-Lock			25cm	O			
AMHL01L-F	Monopolar Hook-Left-45cm			45cm	N/A			
AMHL01L-L	Monopolar Hook-Left-45cm-Lock			45cm	O			

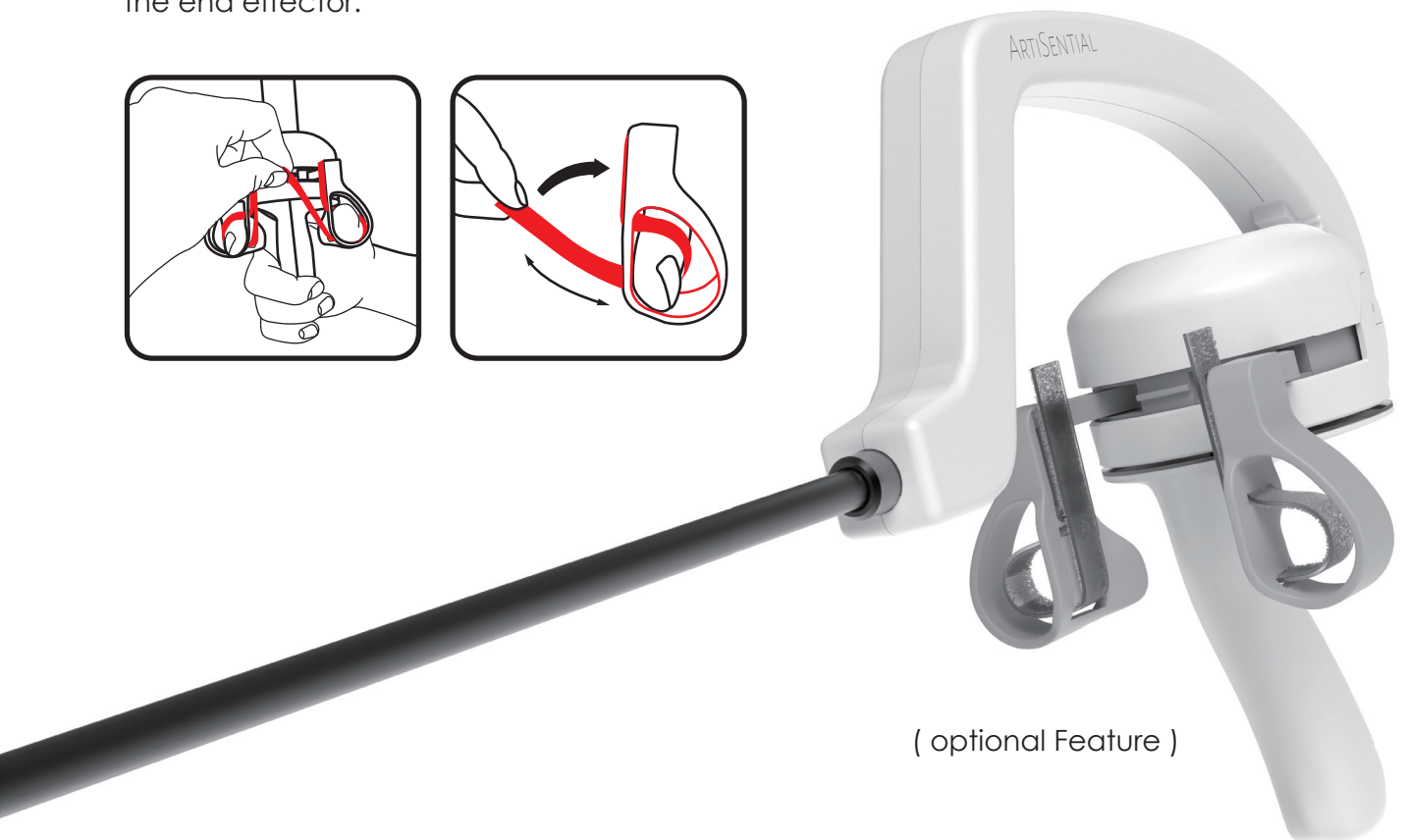
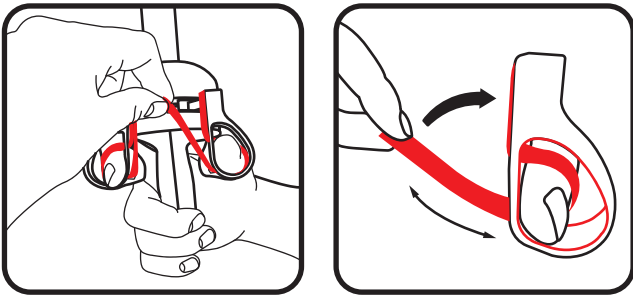
ARTISENTIAL

Articulating Laparoscopic Instrument

— ADJUSTABLE —

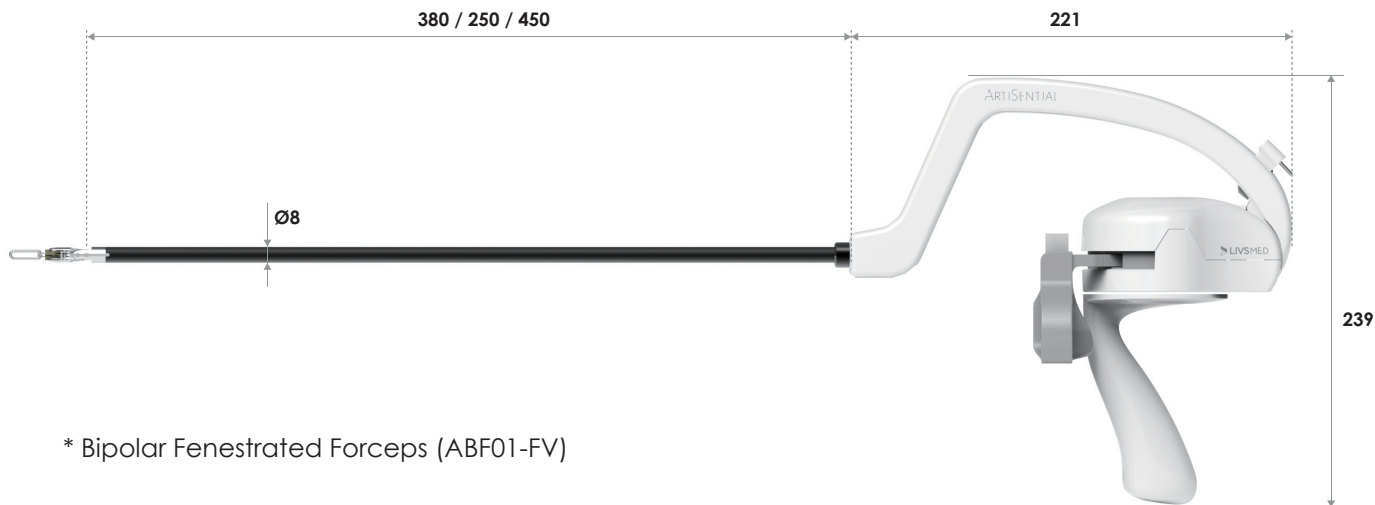
Adjustable Jaw Control Ring

Jaw control rings adjust to the user's fingers, allowing easy and comfortable control of the end effector.



(optional Feature)

SPECIFICATIONS



* Bipolar Fenestrated Forceps (ABF01-FV)

ITEM CODE	PRODUCT DESCRIPTION	JAW LENGTH	SHAFT DIAMETER	SHAFT LENGTH	LOCK	ELECTRODE	UNITS/BOX	USES
-----------	---------------------	------------	----------------	--------------	------	-----------	-----------	------

► Fenestrated Forceps



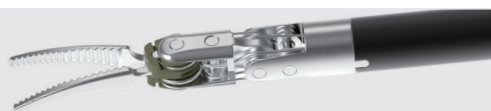
AUF01-FV	Fenestrated Forceps-38cm-Adjustable			38cm	N/A			
AUF01-LV	Fenestrated Forceps-38cm-Lock-Adjustable			38cm	○			
AUF01S-FV	Fenestrated Forceps-25cm-Adjustable	18mm	8mm	25cm	N/A	N/A	1EA/BOXS	ingle Use
AUF01S-LV	Fenestrated Forceps-25cm-Lock-Adjustable			25cm	○			
AUF01L-FV	Fenestrated Forceps-45cm-Adjustable			45cm	N/A			
AUF01L-LV	Fenestrated Forceps-45cm-Lock-Adjustable			45cm	○			

► Bipolar Fenestrated Forceps



ABF01-FV	Bipolar Fenestrated Forceps-38cm-Adjustable			38cm	N/A			
ABF01-LV	Bipolar Fenestrated Forceps-38cm-Lock-Adjustable			38cm	○			
ABF01S-FV	Bipolar Fenestrated Forceps-25cm-Adjustable	18mm8	mm	25cm	N/A	Bipolar	1EA/BOX	Single Use
ABF01S-LV	Bipolar Fenestrated Forceps-25cm-Lock-Adjustable			25cm	○			
ABF01L-FV	Bipolar Fenestrated Forceps-45cm-Adjustable			45cm	N/A			
ABF01L-LV	Bipolar Fenestrated Forceps-45cm-Lock-Adjustable			45cm	○			

► Maryland Dissector



AUD01-FV	Maryland Dissector-38cm-Adjustable			38cm	N/A			
AUD01-LV	Maryland Dissector-38cm-Lock-Adjustable			38cm	○			
AUD01S-FV	Maryland Dissector-25cm-Adjustable	20mm8	mm	25cm	N/A	N/A	1EA/BOXS	ingle Use
AUD01S-LV	Maryland Dissector-25cm-Lock-Adjustable			25cm	○			
AUD01L-FV	Maryland Dissector-45cm-Adjustable			45cm	N/A			
AUD01L-LV	Maryland Dissector-45cm-Lock-Adjustable			45cm	○			

ITEM CODE	PRODUCT DESCRIPTION	JAW LENGTH	SHAFT DIAMETER	SHAFT LENGTH	LOCK	ELECTRODE	UNITS/BOX	USES
-----------	---------------------	------------	----------------	--------------	------	-----------	-----------	------

► Bipolar Maryland Dissector



ABD01-FV	Bipolar Maryland Dissector-38cm-Adjustable			38cm	N/A			
ABD01-LV	Bipolar Maryland Dissector-38cm-Lock-Adjustable			38cm	○			
ABD01S-FV	Bipolar Maryland Dissector-25cm-Adjustable	20mm	8mm	25cm	N/A	Bipolar	1EA/BOX	Single Use
ABD01S-LV	Bipolar Maryland Dissector-25cm-Lock-Adjustable			25cm	○			
ABD01L-FV	Bipolar Maryland Dissector-45cm-Adjustable			45cm	N/A			
ABD01L-LV	Bipolar Maryland Dissector-45cm-Lock-Adjustable			45cm	○			

► Precise Dissector



AUD02-FV	Precise Dissector-38cm-Adjustable			38cm	N/A			
AUD02-LV	Precise Dissector-38cm-Lock-Adjustable			38cm	○			
AUD02S-FV	Precise Dissector-25cm-Adjustable	17mm	8mm	25cm	N/A	Bipolar	1EA/BOX	Single Use
AUD02S-LV	Precise Dissector-25cm-Lock-Adjustable			25cm	○			
AUD02L-FV	Precise Dissector-45cm-Adjustable			45cm	N/A			
AUD02L-LV	Precise Dissector-45cm-Lock-Adjustable			45cm	○			

► Bipolar Precise Dissector



ABD02-FV	Bipolar Precise Dissector-38cm-Adjustable			38cm	N/A			
ABD02-LV	Bipolar Precise Dissector-38cm-Lock-Adjustable			38cm	○			
ABD02S-FV	Bipolar Precise Dissector-25cm-Adjustable	17mm	8mm	25cm	N/A	Bipolar	1EA/BOX	Single Use
ABD02S-LV	Bipolar Precise Dissector-25cm-Lock-Adjustable			25cm	○			
ABD02L-FV	Bipolar Precise Dissector-45cm-Adjustable			45cm	N/A			
ABD02L-LV	Bipolar Precise Dissector-45cm-Lock-Adjustable			45cm	○			

► Needle Holder



ANH01-FV	Needle Holder-38cm-Adjustable			38cm	N/A			
ANH01-LV	Needle Holder-38cm-Lock-Adjustable			38cm	○			
ANH01S-FV	Needle Holder-25cm-Adjustable	12mm	8mm	25cm	N/A	N/A	1EA/BOX	Single Use
ANH01S-LV	Needle Holder-25cm-Lock-Adjustable			25cm	○			
ANH01L-FV	Needle Holder-45cm-Adjustable			45cm	N/A			
ANH01L-LV	Needle Holder-45cm-Lock-Adjustable			45cm	○			

► Precise Needle Holder



ANH02-FV	Precise Needle Holder-38cm-Adjustable			38cm	N/A			
ANH02-LV	Precise Needle Holder-38cm-Lock-Adjustable			38cm	○			
ANH02S-FV	Precise Needle Holder-25cm-Adjustable	9mm	8mm	25cm	N/A	N/A	1EA/BOX	Single Use
ANH02S-LV	Precise Needle Holder-25cm-Lock-Adjustable			25cm	○			
ANH02L-FV	Precise Needle Holder-45cm-Adjustable			45cm	N/A			
ANH02L-LV	Precise Needle Holder-45cm-Lock-Adjustable			45cm	○			

ITEM CODE	PRODUCT DESCRIPTION	JAW LENGTH	SHAFT DIAMETER	SHAFT LENGTH	LOCK	ELECTRODE	UNITS/BOX	USES
-----------	---------------------	------------	----------------	--------------	------	-----------	-----------	------

▶ Clip Applier Medium Large



ACA01-FV	Clip Applier Medium Large-38cm-Adjustable			38cm	N/A			
ACA01-LV	Clip Applier Medium Large-38cm-Lock-Adjustable			38cm	○			
ACA01S-FV	Clip Applier Medium Large-25cm-Adjustable	19mm	8mm	25cm	N/A	N/A	1EA/BOX	Single Use
ACA01S-LV	Clip Applier Medium Large-25cm-Lock-Adjustable			25cm	○			
ACA01L-FV	Clip Applier Medium Large-45cm-Adjustable			45cm	N/A			
ACA01L-LV	Clip Applier Medium Large-45cm-Lock-Adjustable			45cm	○			

▶ Monopolar Precise Dissector



AMD01-FV	Monopolar Precise Dissector-38cm-Adjustable			38cm	N/A			
AMD01-LV	Monopolar Precise Dissector-38cm-Lock-Adjustable			38cm	○			
AMD01S-FV	Monopolar Precise Dissector-25cm-Adjustable	14mm	8mm	25cm	N/A	N/A	1EA/BOX	Single Use
AMD01S-LV	Monopolar Precise Dissector-25cm-Lock-Adjustable			25cm	○			
AMD01L-FV	Monopolar Precise Dissector-45cm-Adjustable			45cm	N/A			
AMD01L-LV	Monopolar Precise Dissector-45cm-Lock-Adjustable			45cm	○			

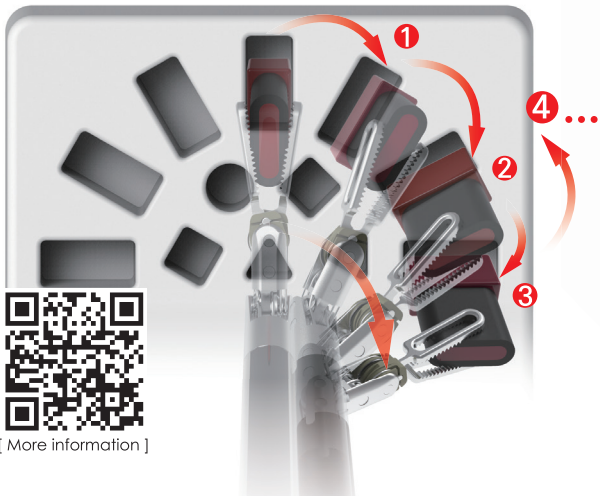
▶ Monopolar Scissor



AMSU01-FV	Monopolar Scissors-38cm-Adjustable			38cm	N/A			
ANSU01-LV	Monopolar Scissors-38cm-Lock-Adjustable			38cm	○			
AMSU01S-FV	Monopolar Scissors-25cm-Adjustable			25cm	N/A			
AMSU01S-LV	Monopolar Scissors-25cm-Lock-Adjustable			25cm	○			
AMSU01L-FV	Monopolar Scissors-45cm-Adjustable			45cm	N/A			
AMSU01L-LV	Monopolar Scissors-45cm-Lock-Adjustable			45cm	○			
AMSD01-FV	Monopolar Scissors-38cm-Adjustable	11mm	8mm	38cm	N/A	Monopolar	1EA/BOX	Single Use
AMSD01-LV	Monopolar Scissors-38cm-Lock-Adjustable			38cm	○			
AMSD01S-FV	Monopolar Scissors-25cm-Adjustable			25cm	N/A			
AMSD01S-LV	Monopolar Scissors-25cm-Lock-Adjustable			25cm	○			
AMSD01L-FV	Monopolar Scissors-45cm-Adjustable			45cm	N/A			
AMSD01L-LV	Monopolar Scissors-45cm-Lock-Adjustable			45cm	○			



ArtiSential Training Kit



Quick and Easy way to Learn
Begins with 1 Peg Block training



LIVSMED | www.livsmmed.com |

LIVSMED (KOREA) | 301, D-dong, Pangyo-ro, Bundang-gu, Seongnam-si, Gyeonggi-do, Republic of Korea
Email. info@livsmmed.com

For more information on approved product for sale in your market, please contact your LIVSMED representative or your local distributor.