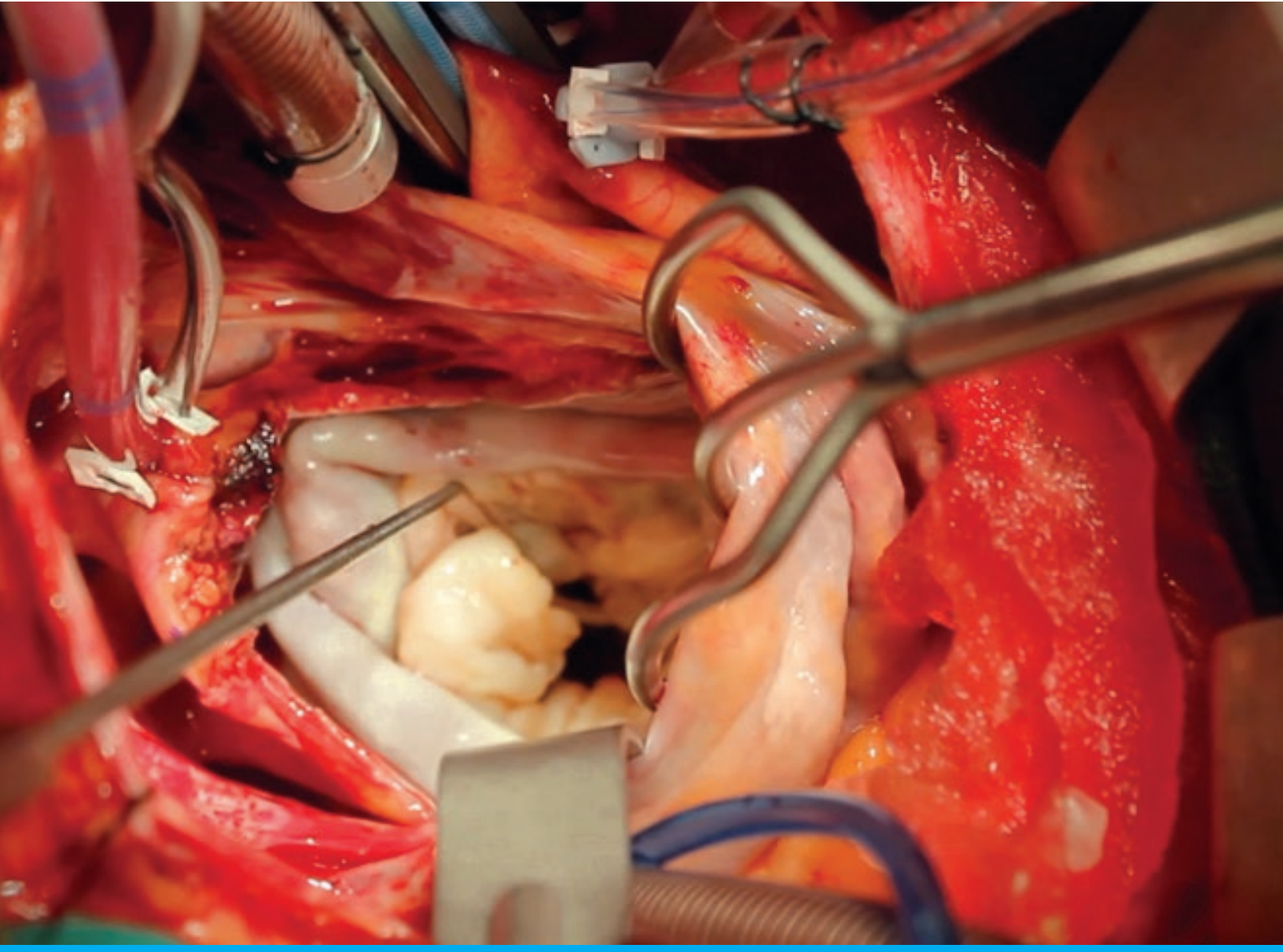


Thompson Retractor

Uncompromised Exposure



Cardiothoracic Catalog

FIRST EDITION

Bolling Mitral Valve Retractor - Drake Hook

Table of Contents

Thompson Retractor: Innovation in Surgical Retraction	3
Bolling Mitral Valve Retractor	4-5
Drake Hook	6-7

Thompson Retractor

Innovation In Surgical Retraction

Thompson Surgical Instruments, Inc. is the market leader in surgical retraction and the original manufacturer of the table mounted retractor. We understand the value of exposure in successful surgery and are dedicated to providing innovative, high quality retractor systems that deliver safe, versatile, low-profile retraction.

The Bolling Mitral Valve Retractor provides extremely low profile, stable, and Uncompromised Exposure of the heart structures for valve procedures. The Drake Hook is a new, innovative tool for use in mitral valve repair. Both were thoughtfully designed with surgeon input to provide the best exposure possible.

The Thompson Retractor has been in use for over 50 years in multiple surgical specialties.

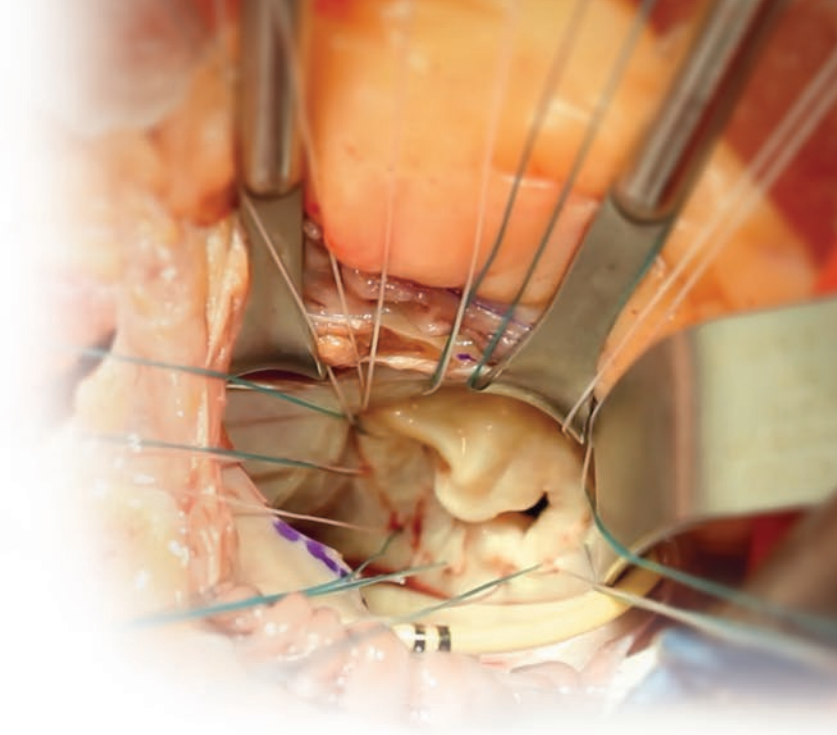
Bolling Retractor System

Maintain Exposure for a Steady Procedure

The Bolling Retractor provides Uncompromised Exposure for a variety of procedures and exposures.

Fast, easy, secure, and out of the way, the fully customizable system is especially ideal for:

- Trans Septal Approach
- Direct Atrial Approach
- Thoracotomy Approach
- Mitral Valve Repair
- Mitral Valve Replacement
- MAZE



“Set it and forget it”
- Steven Bolling, MD



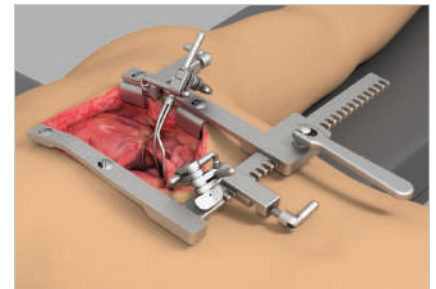
Lowest Profile Available

A frame sitting just above the spreader, combined with shorter handles, makes the Bolling Retractor the lowest profile open heart retractor available.



Strong, Stable Retraction

The secure attachments and joints are the strongest available on the market, resulting in a stable “set it and forget it” system.



Versatility

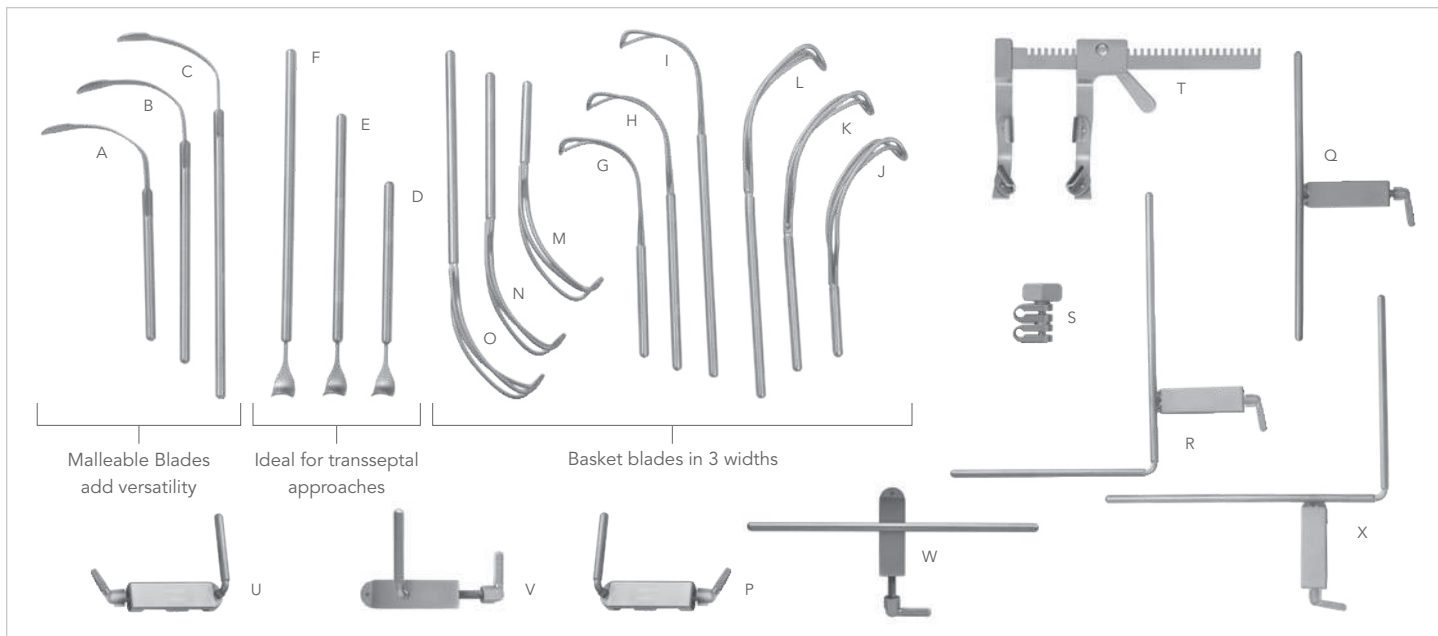
Attaches to most sternal and rib spreaders, allowing for multiple configurations and approaches.

i SYSTEM NOTICE

The Bolling Retractor is compatible with most sternal or rib spreaders. Low profile attachments sit near flush with spreader.

i NOTICE

See our surgical video online at thompsonsurgical.com



BOLLING MITRAL VALVE RETRACTOR KIT #91072CV

REF	QTY	ITEM DESCRIPTION	PART #
A	1	Malleable Paddle 5"	43100
B	1	Malleable Paddle 6 1/2"	43101
C	1	Malleable Paddle 8"	43102
D	1	Cushing 5"	43103
E	1	Cushing 6 1/2"	43104
F	1	Cushing 8"	43105
G	1	Small Basket 5"	43106
H	1	Small Basket 6 1/2"	43107
I	1	Small Basket 8"	43108
J	1	Medium Basket 5"	43109
K	1	Medium Basket 6 1/2"	43110
L	1	Medium Basket 8"	43111
M	1	Large Basket 5"	43112
N	1	Large Basket 6 1/2"	43113
O	1	Large Basket 8"	43114
P	2	CV Clamp L-Bar 2"	47200N
Q	1	CV Clamp T-Bar 8"	47201N
R	1	CV Clamp L-Bar 6" x 8"	47202N
S	3	Universal Joint	47204
	1	Instrument Case	50000BOL

SUGGESTED STERNAL SPREADERS *

REF	ITEM DESCRIPTION	PART #
T	Morse Sternal Spreader 29mm (w) x 22mm (d)	300251
	Morse Sternal Spreader Large 29mm (w) x 38mm (d)	300253

* The Bolling Retractor is compatible with most sternal or rib spreaders.

THORACOTOMY EXPANSION KIT #91074CV

REF	QTY	ITEM DESCRIPTION	PART #
A	1	Malleable Paddle 5"	43100
B	1	Malleable Paddle 6 1/2"	43101
C	1	Malleable Paddle 8"	43102
D	1	Cushing 5"	43103
E	1	Cushing 6 1/2"	43104
F	1	Cushing 8"	43105

BOLLING MITRAL VALVE RETRACTOR ACCESSORIES

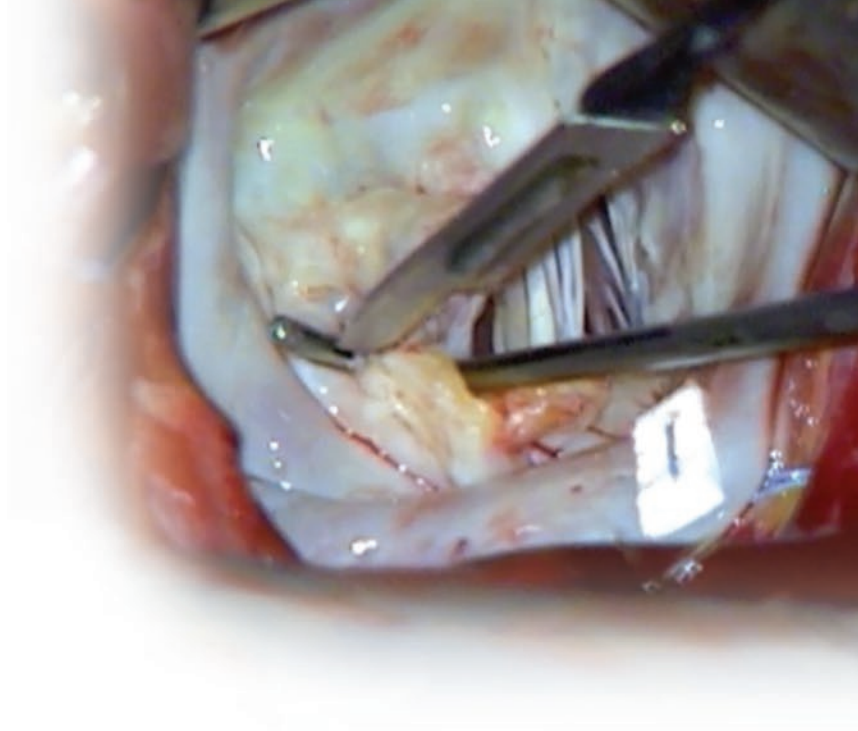
REF	ITEM DESCRIPTION	PART #
U	CV Clamp Mini L-Bar Reversed 2"	47200NR *
V	CV Clamp Mini L-Bar Offset 2"	47200NF *
W	CV Clamp T-Bar Offset 8"	47201NF **
X	CV Clamp L-Bar Reversed 6" x 8"	47202NR ***

* Compare to #47200N ** Compare to #47201N *** Compare to #47202N

Drake Hook

Improved Chord Lysis and Division of Rheumatic Tissue

Designed with input from Daniel H. Drake, MD, the Drake Hook is the only hook on the market that contains a cutting groove to prevent slippage. The tip also features a slightly longer catch, enhancing subvalvular exploration.



"The Drake Hook is an important tool for subvalvular mitral repair. The cutting groove facilitates safe commissurotomy and chord lysis."

- Daniel H. Drake, MD



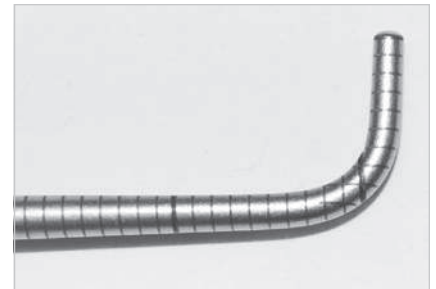
Exclusive Cutting Groove

This unique groove prevents scalpel slippage, easing chord lysis and division of rheumatic tissue.



Laser Etched Markers

Laser etched markers allow for rapid, precise measurements. Smooth finish without measurement ridges won't catch scalpel.



Longer Catch

Slightly longer (1 cm) catch enhances subvalvular exploration for restrictive tissue.





DRAKE HOOK

REF	ITEM DESCRIPTION	PART #
A	Drake Hook (258mm)	51251

INSTRUMENT CASE

REF	ITEM DESCRIPTION	PART #
B	Instrument Case - Drake Hook	50000DH

i NOTICE
Thompson recommends a purchase or trial of two hooks as it may be desirable to use two at a time.

i INSTRUMENT CASE NOTICE
Instrument Case (50000DH) holds two hooks.

For a Free Trial Call Today*

1.800.227.7543

Rev A
121817
dc cardio



Uncompromised Exposure

VISIT US ONLINE: THOMPSONSURGICAL.COM

Thompson 
SURGICAL INSTRUMENTS

* Free trial valid for U.S. customers only. Customers outside the U.S.A., please call +1-231-922-0177 for availability.

© 2018 Thompson Surgical Instruments, Inc. Traverse City, Michigan. Printed in U.S.A.

© S-Lock®, PLA®, and the "T Circle" logomark  are Registered Trademarks of Thompson Surgical Instruments, Inc.

Patents: US4971038, US5025780, US5888197, US5897087, US5902233, US5984865, US6033363, US6416465, US6511423, US7338442, US7749163, US8257255, US8360971, US8617064
Other patents pending.

Made In
USA 